



International Harvester Collectors • Chapter #23

ALABAMA

Fall 2015



Alabama IH State Show at Russellville

The day started out bright and dry for our 2015 State Show at Russellville's 35th annual Watermelon Festival on August 15. But by the time our 11:00 a.m. meeting came to a close, the heavens opened up and a major summer "frog-strangler" set in to soak the displays and ruin everyone's fun.

Earlier in the week, Russellville mayor and Chapter #23 member

David Grissom informed president Randy Bodine that he was making the air-conditioned A.W. Todd Centre available for our third meeting of the year.

Directors and members who attended the meeting could not be more grateful to David for his hospitality. It ended up not being a very good day to conduct a meeting in a tent.



A feature of our annual State Show is awarding of plaques for various categories of participation. (L-R) Buddy Banks won for tractor brought the greatest distance. Sherman Roberts won for oldest running tractor. Larry Lemmond won two plaques for most engines and oldest running engine. And young Logan Bodine represented Bodine Farms for most tractors brought to the show.

Randy's Ramblings

• President's Letter from Randy Bodine •

Have you ever been talking on the phone to someone and you are basically finished but you haven't said goodbye and the phone cuts off? The disconnect just cuts short the goodbye – no real reason to call back. Well, that's the way I felt at our state show in Russellville.

We had a great turnout with several new faces and friends we haven't seen in a while. The meeting was one of the best attended club meetings we've had – especially in a nice, air-conditioned facility.

The impressive group of members on hand allowed us to acknowledge in a big way our retiring vice-president, Ray Best, for his 12 years of service to the chapter, and also welcome Gary Bell to the office as his successor. (*See more about Ray Best's contributions and accomplishments on page 10*). I'm looking forward to working with Gary as we continue to grow the chapter and prepare for RPRU 2018.

I want to say "thank you" again to the town of Russellville, Mayor David Grissom, and Show Director, Mike Powell. We were all having such a good time and just as the meeting ended, the rain came down in buckets and everyone began scrambling.

That's when I felt like the phone had disconnected. I didn't get to say "goodbye" and "see you again soon". So, in order for all of us to feel better, I look forward to "seeing you again soon" at the club meeting on October 10th at 11:00 a.m. at Shelby Iron Works Park.

Shelby is located just south of Birmingham near Columbiana (*see map on page 11*). There will be syrup making, sawmill running, historic iron works, vendors, cake auction, and lots of TRACTORS. You can visit their website at www.shelbyironworks.com. Members Harry Burks (#321), Andy Vansant (#276) and Tim Brasher (#277) are looking forward to us coming.

We will have several special items of business to handle. We will be adding three new directors, setting the dates of the club meetings for next year and updating the show schedules for the

coming year. I hope you will make plans to join us.

We are planning a bus trip to RPRU 2016 in Union Grove, Wisconsin, in June of next year. Please let me know if you want seats on the bus and a room held for you. More details will follow.

Have you heard that Red Power Round Up, the largest gathering of International Harvester enthusiasts in the world, is coming to Montgomery, Alabama, June 13-16 of 2018? Well, it is, and we want you to be part of it. Volunteer to work in some area and you will have a great time. Also, we need to be telling everyone we come in contact with all about what an exciting event this is going to be and invite them to participate with us.

I also need your help with something. The Alabama State Fair will be at Garrett Coliseum in Montgomery, Alabama, October 30 – November 8. They have given us a wonderful opportunity to bring agricultural heritage back to the state fair. They have supplied us a very large building to put together an ag heritage display.

I need everyone to bring tractors and agriculture displays so that we fill up this building (*See ad on page 11 for more information*). This will be a great way to promote Red Power Round Up 2018 each year leading up to the event. We need

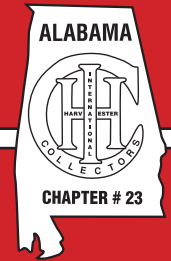
local/regional support and we need local/regional people to attend RPRU 2018. This is a great way of getting the word out in this area, so please plan to help.

Continue to tell your friends and acquaintances about how to become a member of our wonderful club – Alabama IHC Chapter #23. We've had a great year. We have increased membership, are financially stable, and have been awarded RPRU 2018. This is a pretty good recipe for success! The future is bright for Chapter #23 and we want you to be involved and get excited about the amazing events to come.



**New Vice-President
Gary Bell**

Randy



Officers

Randy L. Bodine – President
1798 Lauren Lane
Auburn, AL 36830-7562
(334) 887-8867
randy@bodines.com

Gary Bell – Vice President
58 N. Johnson Chapel Rd.
Danville, AL 35619-6504
(256) 773-4922
(256) 303-9525
gbell4922@charter.net

Clay Nordan – Sec/Treas.
2907 Virginia Road
Birmingham, AL 35223-1253
(205) 870-1535
cnordan@me.com

Directors

Gary Bell '15

Brad Bodine '15
2322 Crockett Cr.
Guntersville, AL 35976-7533
(256) 582-8593
farmallone@hotmail.com

Larry Lemmond '15
1358 Community Lane
Hartselle, AL 35640-6804
(256) 773-2692
larrylemmond@aol.com

Roger Heath '16
3448 Creek Circle
Guntersville, AL 35976-2704
(256) 582-4334
idlehour332@gmail.com

Clay Nordan '16

Donnie Wedgworth '16
782 AL Highway 61
Greensboro, AL 36744-5490
(334) 352-1038
donniwedgworth@gmail.com

Charles Allen '17
4518 Mitzi Dr.
Gardendale, AL 35071-2664
(205) 631-4173
cwallen3@att.net

Wiley Johnson '17
156 Jimshill Rd.
Wetumpka, AL 36093-2421
(334) 514-6395
tractormanjhn@aol.com

Conrad Bell '17
701 Cherokee Ln. NW
Hartselle, AL 35640-1721
(256) 773-2614
cbell701@charter.net

Advisors

Joe Criswell
Hal Hoaglin
Sherman Roberts

An Alabama 501 (c)(7)
Non-Profit Corporation

**Minutes of AL Chapter #23
International Harvester Collectors
Directors Meeting at
Russellville Show
11:00 a.m., August 15, 2015**

7 Directors present

Conrad Bell
Gary Bell
Brad Bodine
Roger Heath
Larry Lemmond
Clay Nordan
Donnie Wedgworth

2 Advisors present

Hal Hoaglin
Sherman Roberts

4 Visitors present

Tami Crofoot
Hope Banks
Jacqueline Whitesides
Sally Grimmitt

26 Members present

Vincent Baham
Buddy Banks
Harold Beck
Retha Beck
Ray Best
Jana Bodine
Jessica Bodine
Randy Bodine
Robert Bodine
Jerry Briley
Buck Brown
Robert Ellis
Robert Gray

Charlie Grimmitt
David Grissom
Jimmy Hill
Dennis Johnson
Gerald Keeton
Carl McMurray
Gary Moore
Jane Roberts
O'Neal Samuels
Glenn Sanders
Frankie Shaw
James Smith
Roger Whitesides

The meeting was called to order by president Randy Bodine and he began the meeting with an invocation.

The first agenda item was Clay's report. He had no additions to the minutes as published in the recent newsletter and said that the chapter balance is currently \$19,300. He reported that our membership currently stands at 275 with no additions since the Summer newsletter came out.

Randy called for a motion to approve the minutes. There was a motion, second, and approval of the minutes as printed in the newsletter.

The next agenda item dealt with the selection of a new vice-president to replace Ray Best, who has retired from the position.

Randy stated that only one nomination for the office had been submitted and that name was Gary Bell, member #367 of Danville. Gary was asked prior to his nomination if he would serve if elected, and he responded that he would.

With no opposition or other candidates to consider, Randy announced that Gary Bell is the new vice-president of Alabama Chapter #23 and his tenure would begin immediately.

Randy thanked Ray Best for his 12 years of service to the chapter as its vice-president and asked him to come forward to accept a plaque recognizing him as a great advocate for our chapter and for the outstanding job he has done during his time in office.

Ray offered a few words of thanks to Randy and the chapter and reminded everyone that he may be stepping down from the vice-presidency, but had agreed to continue to make his annual calls in January to members who were tardy with payment of their annual dues.

These phone calls are a big part of our campaign to retain every active member, so the chapter remains indebted to Ray for agreeing to continue doing this important job.

Randy then discussed the State Show for 2019. Bids to host this show are now open and that we continue to request that any shows that have hosted in the last two years or are already scheduled to host in the future wait to submit a new bid. Currently we have one bid from the Boaz show. If more bids come in before our next meeting at Shelby Ironworks on October 10, we will let the membership vote on the host for 2019.

The next agenda item for Randy was his announcement that a new event will be added to our calendar this fall, the Alabama State Fair, October 30 – November 8 at Garrett Coliseum in Montgomery. We have been asked by the State Fair to bring tractors and ag-related displays to the fair in an effort to bring agriculture back to the state fair. The fair has assured Randy that our equipment will be secure during the fair and that the move-in dates will be October 24 – October 28 for ag displays.

Randy then moved on to review the remaining show schedule for 2015 and asked if anyone had a show they wanted to promote. Spokesmen for Jeans on the River, Jasper Veterans Day Parade, Fyffe, St. Florian, and the AC Model G Roundup spoke up in support of their shows.

There was some question whether or not the show at Orrville would go ahead this year. Randy said that he believed it will, but will find out for sure and get the word out prior to the November 14 show.

Randy then recognized Russellville Mayor, David Grissom (member #420) and complimented him on the outstanding IH tractor restorations he was displaying on the street for today's show. David spoke briefly to welcome chapter #23 to his town and thank us for conducting our meeting today at this year's show, which he expected to attract 35,000 visitors.

The next order of business was the awarding of Alabama State Show plaques of recognition to members and visitors for their equipment displays.

The oldest running tractor plaque went to Sherman Roberts for his 1937 Farmall F-12. Two plaques went to

Larry Lemmond, one for oldest engine and the second for most engines (7) brought to the show. The plaque awarded for the tractor that traveled the longest distance to the show went to Buddy Banks (320 miles one way). The plaque for the engine that came the longest distance went to Bud Zerzanek from DeKalb County. The final plaque for most tractors brought to the Russellville show went to young Logan Bodine of Guntersville, representing Bodine Farms.

The final topic on the agenda was an update on initial preparations for hosting the Red Power Roundup in Montgomery in 2018. Randy said that a separate bank account has been set up with Regions Bank to handle income and expenses related to the RPRU. This is a very intentional step to insure that we don't mingle any of the chapter's regular operating funds with funds devoted strictly to the national show.

We have a commitment from the Montgomery Convention and Visitors Bureau for a donation of \$10,000 to go toward preparations for the show, and the South Dakota IH chapter #21 has also sent us a check for \$1000 in support of our efforts.

Randy said that he is negotiating the contract with Garrett Coliseum and it needs a few tweaks before he will be ready to sign it.

He said that the URL (internet address) for the RPRU 2018 website has already been purchased and that the Montgomery CVB will build and host the site.

Randy said that 7000 hotel rooms are located in the greater Montgomery area, so he encouraged everyone to plan on spending the entire week at the show. He hopes to identify a host hotel soon with a special group rate for chapter #23.

With no further business to discuss, the meeting was adjourned.

*Respectfully submitted,
Clay Nordan
Secretary/Treasurer*

Financial Report

Net Assets, August 2015 ... \$20,262.91

Income

Dues Collected..... 50.00
Subtotal..... 50.00

Expenses

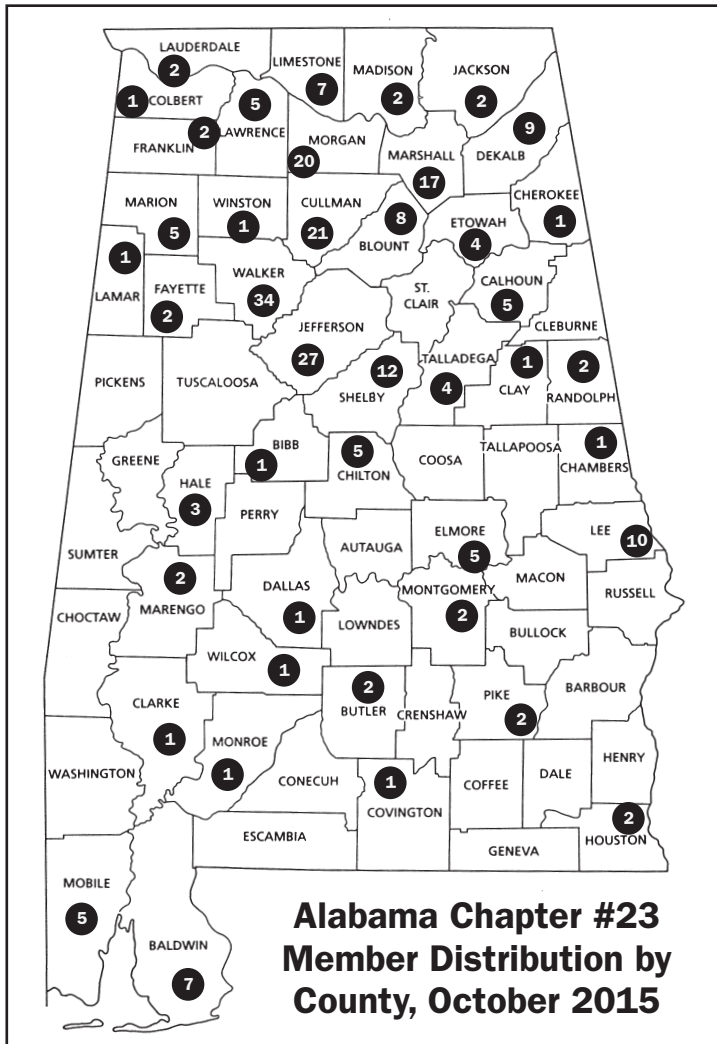
Newsletter 738.46
National Dues Paid 30.00
Postage for Dues Collection..... 294.00
State Show Plaques 132.98
Subtotal..... 1195.44

Net Assets, Oct. 2015 \$19,117.47



Deceased Members

Wynell Keeton #5, 2009
 Hershel Needham #40, 2007
 Lloyd Gilreath #49, 2006
 Billy Sparks #51, 2011
 J.R. Hamrick #66, 2010
 Carey Ayers #68, 2002
 James T. Ballard #80, 2013
 Jessie German #90, 2002
 Don McGough #93, 2006
 Bob Banks #136, 2010
 A.Q. Maze #144, 2011
 James Williams #150, 2005
 Bobby Brown #162, 2012
 Jack Neal #169, 2009
 Waymon Pesnell #175, 2006
 Joe Willis #181, 2010
 James H. Turner #188, 2013
 Lavern Parker #198, 2011
 Garland Dodd #261, 2011
 Bill Brock #280, 2009
 Rudy Cole #336, 2010
 Gene Young #389, 2013
 Johnny Self #427, 2014
 Richard Greer #443, 2013
 Gary Warren #486, 2014



277 Active Members

2 New Members Added Since Last Newsletter

Out of State Members

Florida	2	Mississippi	4
Georgia	8	Nebraska	1
Indiana	2	Tennessee	2
Kansas	1	Texas	2
Louisiana	8		

6th Annual Harvest of the Valley Farm Toy Show & Sale

Lawrence County High School Auditorium

143 College St. • Moulton, AL 35650

Farm Toys, Antiques, Crafts, etc.

Vendor Fee is \$10.00 per table
 Some Tables will be Available to Rent
 Building Will be Secured Overnight
 Proceeds Go to Help Needy Family for Christmas
 For Information, Contact Dwight Vanderford
 (256) 974-6960 • (256) 565-9563
 (Leave Message and Will Return Call)
 Admission: 10 Years and Under Free • 11 to Adult \$4.00

Friday, Nov. 6th • 6:00 p.m. – 9:00 p.m.
 Saturday, Nov. 7th • 8:00 a.m. – 2:00 p.m.

→ Set Up Available November 6th at 9:00 a.m. ←



TALLADEGA TRACTOR COMPANY

Kubota  STIHL®

RONNIE LOTT, President 
205-365-1629 • rlott@talladegainternational.com

What Else Can We Do For YOU?

256-362-6113 • 800-593-6113 • Fax: 256-362-6551
35450 AL Hwy 21 N • Talladega, AL 35160
www.talladegainternational.com



BUSH HOG



MOULTON IMPLEMENT CO., INC.

13511 ALABAMA Hwy. 157

P.O. Box 548

MOULTON, ALABAMA 35650

KENT GILLEY

256-974-5021

Paquette's Historical Farmall Museum J Stewart Paquette

Restorer



Collector

www.stewsihstuff.com

stewsstuff@gmail.com

Cell 352-267-4448 Phone 352-728-3588

Alabama Tractor Pickers



**BUY/SELL TOP CASH \$\$\$ PAID
IH FARMALL TRACTORS**

• Specializing in Cub, Super A, 100, 130, & 140 "offset" tractors & in Cultivating and Planting Equipment, as well as many other implements and parts.



Larry Gamble
205-529-5999

Chase Gamble
205-368-5339

ihfarmallrtr@gmail.com

Next Meeting • Shelby, AL
Shelby Ironworks Park Show
October 10, 2015 • 11:00 a.m.

B&R

TRACTOR & EQUIPMENT

PROFESSIONAL TRACTOR RESTORATION

RAYFORD JOHNSON

HWY. 9 N.

LINEVILLE, AL 36266

1-800-396-0345

256-396-0343

Devon's Tractor Parts

888-560-1466

1910 E. 202nd Street, Westfield, IN 46074

Fax: (317) 867-3892 Email: dwil317@yahoo.com

www.devonstractorparts.com



CASE IH



SNEAD EQUIPMENT SALES & SERVICE, INC.

88043 Hwy 278 East

P.O. Box 538

Snead, AL 35952

Ph: 205-466-3500

205-466-7168

Fax: 205-466-7169

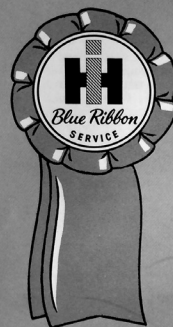
www.sneadequip.com

Joe Criswell

Vermeer

MCCORMICK

NEW IDEA



Blue Ribbon Service

Thank You *Mr. Best*

At the meeting at Russellville in August, vice-president Ray Best retired from the office after 12 years of loyal service to Chapter #23.

Ray joined the club in November of 2000 and was appointed vice-president in November of 2003, replacing our first vice-president, Wade Knight of Athens.

Although Ray never had to preside at a meeting in the absence of the president, he has always been willing to do anything for the chapter that was needed, especially at tractor shows and the annual phone calls he makes in January to “hammer” members who are tardy with their dues payment. It’s not unusual for him to get a dozen or more members to send in their dues who have not responded to any of their mailed reminders.

Fortunately for us, Ray has agreed to continue to make these calls on behalf of the chapter at the close of dues collection. Our goal is to retain as many active members as possible, and these phone calls go a long way toward helping us achieve this ambitious goal.

Ray is known to long-time fellow members for his expertise with anything mechanical and especially for his meticulous paint jobs. When Ray finishes a tractor restoration you can be sure that it will be a gleaming showpiece. Ray also gets creative at times and has designed and fabricated a narrow-front Cub as well as a “Double Cub”, among others.

Ray lives with his wife, Betty, in Forestdale in Jefferson County. Visitors to his workshops out back can count on seeing an amazing variety of tractors and lawn tractors of all shapes and sizes. Until recently, Ray has raised a big garden every summer, including more than 100 tomato plants that provide him with a little extra income.

Officers and directors of Chapter #23 thank Ray for his years of devotion to the chapter. At the Alabama IH State Show for 2015 at Russellville, Ray was awarded a plaque recognizing and acknowledging his many years of service to our state’s IHC chapter.



Ray having some fun with J.R. Hamrick & Preston Jones at a Hanceville show.



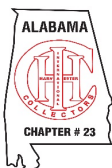
Ray on his finished “Double Cub” and in the shop during painting & assembly.



(Above) Ray enjoys the annual CubFest in Louisiana each spring and gets involved with Cubs that are brought in for repairs. (Right) Ray is awarded a plaque and thanked by president Randy Bodine for his years of service to the club.

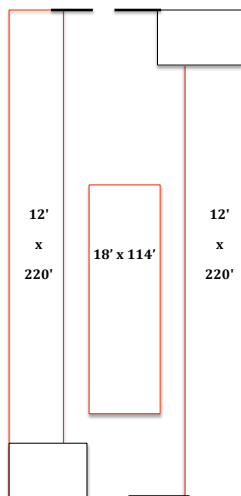


Look for stories on Ray Best from past newsletters at www.alabamaihc.org



**LET'S BRING AGRICULTURE
HERITAGE
BACK TO THE
STATE FAIR!**

October 30th - November 8th 2015
Garrett Coliseum, Montgomery, AL



The Alabama National Fair is inviting **ALL** tractors, implements and demonstrations that reflect our agriculture heritage. All makes and models are welcome. The exhibits will be housed inside a 220' x 80', concrete floor building, able to hold at least 100 tractors. If your display is mounted on a trailer, there is plenty of room to drop the trailer inside the building. **Exhibits can be set up from October 21st-28th.** Exhibits remain on display throughout the fair. You do not have to stay with your exhibit unless you want to. **The exhibits can be removed from November 9th-16th.**

For More Information Contact:
Randy Bodine, President of Alabama IHC #23 - (334) 749-4958
Jimmy Dickey, Manager of Alabama National Fair - (334) 272-6831
1555 Federal Drive, Montgomery, AL



An International 240 Utility at Piney Chapel.

2015 Tractor Show Schedule

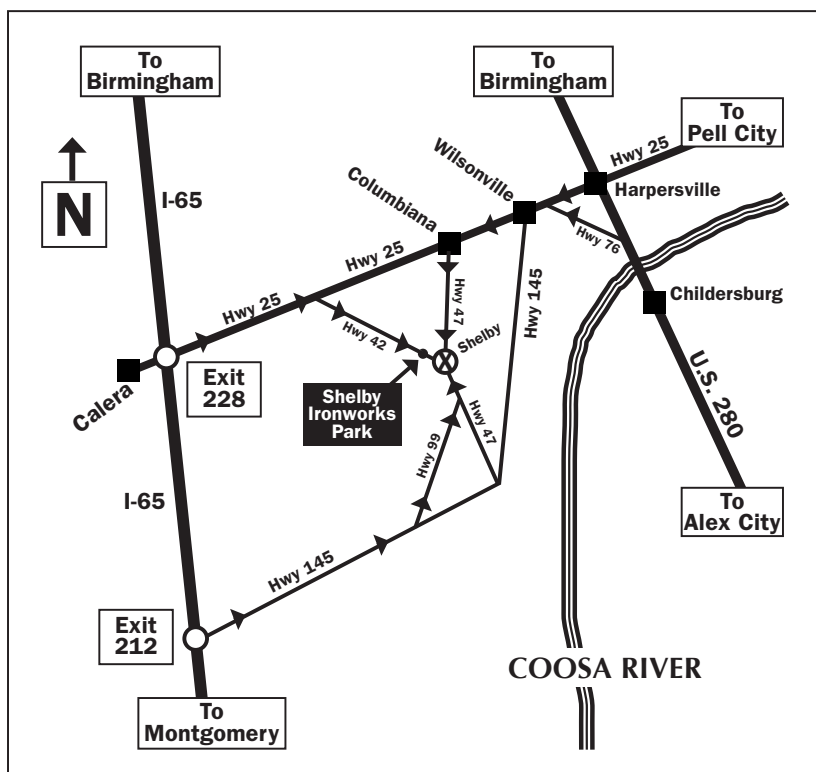
Gadsden - Noccalula Falls "G" Roundup	Oct. 9-10
Falkville Festival	Oct. 10
**Shelby - Iron Works	Oct. 10
Dothan - Landmark Park	Oct. 17
Jasper Heritage Festival	Oct. 17
Cordova - Jean's On the River	Oct. 24
Hartselle - Southland Flywheelers Farm	Oct. 24
Greenville	Oct. 31
Jasper Veterans Day	Nov. 7
Orrville	CANCELLED

**Alabama Chapter 23 Meeting at 11:00 a.m.

RPRU 2018 Committees

Chairman

Announcing/Technical.....	Matt Bodine
Camping	Ed Bottoms
Chapter Building/Tables/Hospitality	Kasey Bodine
Cub Cadets	Richard Artz
Engines.....	Larry Lemmond
Exhibitor Registration.....	Vicki Lott
Feature	Wiley Johnson
Finance.....	Jana Bodine
Gates.....	Retha Beck
Harvester Heritage	Wiley Johnson
Inside Vendors.....	Robert Bodine
Kid's Activities	Cynthia Brown
Load/Unload/Forklift.....	Bobby Blankenship
Outside Vendors	Robert Bodine
Parts Corral	Buck Brown
Publicity/Advertising.....	Clay Nordan
Refrigeration	Kevin Darts
Scouts	Rob Young
Show Book.....	Clay Nordan
Show Toy	Randy Bodine
Steel Wheel Tractors/Hand Crank.....	Joe Mims
Tractors	Sherman Roberts
Trucks	Conrad Bell



Map to Shelby, Alabama
& Shelby Ironworks Park
Chapter #23 Meeting
11:00 a.m. October 10, 2015

Gilleys pass 50-year mark at Moulton Implement

By Luke Slaton
Editor

Herschel Gilley was honored last week for 50 years service as a dealer for what are now Case-IH tractors.

The Cullman County native moved to Moulton after purchasing the International Harvester dealership here from Dewey Bynum in 1953.

At the time, the dealership, named Moulton Implement Co. by Gilley, was located on Court Street, just west of the courthouse square.

In 1974, the federal government's Urban Renewal program furnished money to the city to purchase that property for the park that is now located there and Gilley relocated to the business's present location on Ala. 157 north.

"We were one of the first businesses out here on the highway," he recalled.

International Harvester went through a couple of mergers over the years and is now Case-IH. It still features bright red tractors.

Officials from Case-IH were on hand Wednesday, July 30, to present Gilley with a plaque marking his company's milestone.

Mayor Barbara Coffey and several city council members were also on hand for the ceremony, and Coffey presented Gilley with a key to the city.

Gilley graduated from Auburn University (then Alabama Polytechnic Institute) in 1942 and was commissioned a second lieutenant in the Army through ROTC.

After four years military service, he returned to Cullman County as a vocational agriculture teacher at West Point High School.



From left are Kent Gilley, J.H. Gilley, Irene Gilley, Case-IH business manager Tim Mills and Case-IH product specialist Wiley Johnson. The Gilleys were honored for operating Moulton Implement, the dealer for what is now Case-IH tractors, for 50 years.

After two years of teaching, his father-in-law, who operated the IH dealership in Cullman, enticed him to join that business by offering him a \$1,000 raise on his \$3,000 annual teaching salary.

He served a five-year apprenticeship in that business, but began to look for an opportunity on his own.

He found it in Moulton and moved his family here after buying the business.

Gilley has seen farming change a lot over the years.

"Back then, every farm, even if it was only 20 or 40 acres, had a complete set of equipment, including tractor, disk harrow, cultivator and breaking plow," he recalled. "People made a living on small farms and there were a lot of them. Now there are only a few very large farms or there are hobby farms."

Gilley recounted the policies that have allowed him to prosper over 50 years in business:

- Show your appreciation for all customers, rich and poor.
- Develop a reputation for honor, honesty and fair play – be a man of your word.
- Be sure each customer gets a dollars' worth of merchandise or service for each dollar spent.
- Watch your cash flow. Accounts receivable may look good on a financial statement, but will not pay for

Thanks to Wiley Johnson, (#295) who sent in this article on Moulton Implement that ran in The Moulton Advertiser in August of 2003. The article recognizes the Gilley family of Moulton for 50 years as an IH and Case-IH dealership. Wiley was on hand for the award ceremony as part of his job as a Case-IH product specialist. Kent Gilley operates the business today and is Chapter #23 member #137.

CASE-IH

CUB CADET

MOULTON IMPLEMENT CO., INC.

13511 Alabama Highway 157
P.O. Box 548
Moulton, Alabama 35650

August 7, 2003

Wylie Johnson
156 Jimshill Road
Wetumpka, Alabama 36093

Dear Wylie:

It was good to see both you and Tim. We appreciate your taking the time to come and present the 50th Anniversary plaque. Much has changed in our industry and our world since Moulton Implement began. It is appropriate that the presenters of the recognition are two individuals that we have known and who have known us.

I hope you will enjoy reading the enclosed article from our local, weekly paper. The picture turned out well and the placement in the paper was very visible. Both Daddy and I have gotten many positive comments on both his longevity with International/CNH and the quality of our product since the article appeared.

Again, thank you for helping bring attention to our business and to fifty years of association with our product and our industry.

Sincerely,

Kent Gilley

Kent Gilley
Vice President Moulton Implement Company

Gilleys pass 50-year mark at Moulton Implement

By Luke Staton

Herchel Gilley was honored last week for 50 years service as a dealer for what are now Case-IH tractors.

The Calhoun County native moved to Moulton after purchasing the International Harvester dealership here from Dewey Byrum in 1953.

At the time, the dealership, named Moulton Implement Co. by Gilley, was located on Court Street, just west of the courthouse square.

In 1974, the federal government's Urban renewal program furnished money to the city to purchase that property for the park that is now located there and Gilley relocated to the business' present location on Ala. 157 north.

"We were one of the first businesses out here on the highway," he recalled, "a couple of mergers over the years and red tractors."

Officials from Case-IH were on hand Wednesday, July 30, to present Gilley's milestone.

Mayor Barbara Coffey and several city council members were also on hand for the ceremony, and Coffey presented Gilley with a key to the city.

Gilley graduated from Auburn University in 1942 and was commissioned a second lieutenant in the Army through ROTC.

After four years military service, he returned to Calhoun County as a vocational agriculture teacher at West Point High School.

After two years of teaching, his father-in-law, who operated the IH dealership in Calhoun, enticed him to join that business by offering him a \$1,000 raise on his \$3,000 annual teaching salary.

He served a five-year apprenticeship opportunity on his own.

He found it in Moulton and moved his family here after buying the business.

Gilley has seen farming change a lot over the years.

"Back then, every farm, even if it was only 20 or 40 acres, had a complete set of equipment, including tractor, disk, harrow, cultivator and breaking plow," he recalled. "People made a living on them. Now there are only a few very large farms or there are hobby farms."

Gilley recounted the policies that have allowed him to prosper over 50 years in business:

- Show your appreciation for all customers, rich and poor.
- Develop a reputation for honesty, integrity and fair play — be a man of your word.



From left are Kent Gilley, J.H. Gilley, Irene Gilley, Case-IH business manager Tim Miles and Case-IH product specialist Wiley Johnson. The Gilleys were honored for operating Moulton Implement, the dealer for what is now Case-IH tractors, for 50 years.

- He sure each customer gets a dollar's worth of merchandise or service for each dollar spent.
- Watch your cash flow. Accounts receivable may look good on a financial statement, but will not pay for due merchandise.

- Don't order more than you can pay for. Keep a reasonable amount of cash reserve for a rainy day.
- Work hard — there is no substitute for it.

- Employ good help that you can depend on. Train them and trust them.
- Believe in the product you sell.
- Have the support of your family in the bad days and good days, because

- both will come.
- Deal with a supplier that has your company's interest at heart. Together you will grow, separately you will perish.

One of Gilley's sons, Kent, has worked with him in the business for 35 years.

Gilley and his wife Irene live in Moulton. They have two other sons: Larry in Huntsville and Keith in Moulton.

In addition to handling sales, parts and service for Case-IH products, Moulton Implement is also a dealer for Cub Cadet lawn tractors and Bush Hog equipment.

due merchandise.

- Don't order more than you can pay for. Keep a reasonable amount of cash reserve for a rainy day.
- Work hard — there is no substitute for it.
- Employ good help that you can depend on. Train them and trust them.
- Believe in the product you sell.
- Have the support of your family in the bad days and good days, because both will come.
- Deal with a supplier that has your company's

interest at heart. Together you will grow, separately you will perish.

One of Gilley's sons, Kent, has worked with him in the business for 35 years.

Gilley and his wife Irene live in Moulton. They have two other sons: Larry in Huntsville and Keith in Moulton.

In addition to handling sales, parts and service for Case-IH products, Moulton Implement is also a dealer for Cub Cadet lawn tractors and Bush Hog equipment.

There are many more color photos to view from the show at Russellville at www.alabamaih.org under "Tractor Show Photos."



Thousands of visitors descend on Russellville each year for the annual Watermelon Festival. (Right) The 2015 Watermelon Queen, Lacey Lane Brekeen, poses for a photo at The Roxy Theatre, the town's movie house from 1949 until 1976.



Four near-perfect IH restorations displayed on West Lawrence Street by Russellville mayor David Grissom (#420) .



A nice group of Chapter #23 Farmalls lined up near the A.W. Todd Centre for the Watermelon Festival show.



(Left) Chapter #23 members visit in the shade before the meeting at Russellville. (Above) Robert Ellis (#549) brought his IH 1256 to this year's Watermelon Festival tractor show in Franklin County.



A good showing of Farmalls and other brands of antique tractors at the Piney Chapel show near Athens, AL on August 8, 2015.



Grinding cornmeal with stationary engine power at Piney Chapel.



Billy Ferguson's excellent IH truck at Piney Chapel.



Charlie (#339) and Sally Grimmitt on their Farmall B at Piney Chapel.



This handsome IH van was spotted at the Piney Chapel show.



This McCormick Super W-4 is a new show tractor for Conrad Bell (#366).



A good looking Farmall H and wagon combination restoration on display at Piney Chapel.



THE AWARDS PALACE

Awards fit for a King or Queen

425 2nd Avenue SW

Cullman, Alabama 35055

256-737-8787

256-737-8796 FAX

Melba Palys

awardspalace@gmail.com

Royal Treatment For Every Customer



We Buy & Sell Used
Farm Equipment



CAMPBELL'S USED PARTS TRACTORS & IMPLEMENTS

4351 Pulaski Highway
Lawrenceburg, TN 38464

JAMES W. CAMPBELL

(931) 762-7185

(931) 242-5211

Little Red Tractor Co. LLC

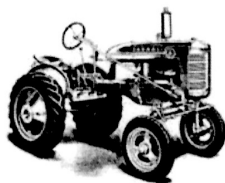
Parts for Old IH Tractors & Equipment
Manuals for Most Brands

Glen Mlnarik
(402) 986-1352

124 Marion Street
Howells, NE 68641

e-mail: glen@littleredtractor.net
www.littleredtractorco.com

Hours: Monday-Thursday 8-5



Jean's On The River Restaurant

Open Thursday thru Sunday
11:00 AM to 8:30 PM

Phone:
(205) 483-0024

Phone:
(205) 648-7171